

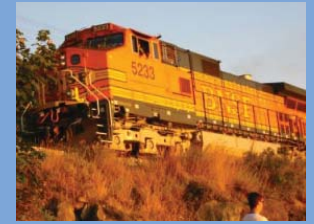
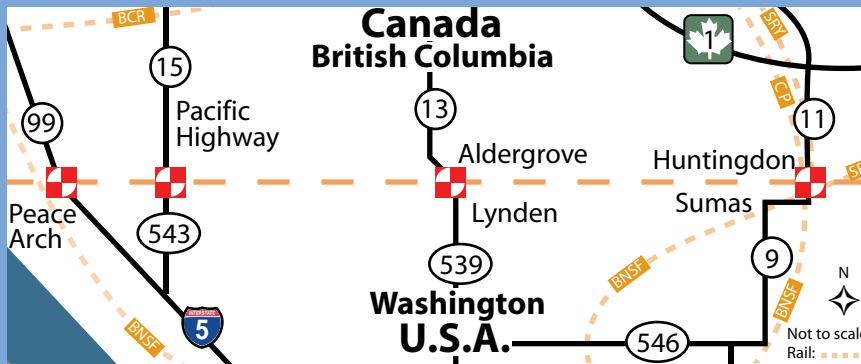
IMTC

The International Mobility & Trade Corridor Project

IMTC Project participants identify and promote improvements to the transportation and inspection systems of the Cascade Gateway with the goal of increasing cross-border mobility, safety, and security.

www.wcog.org/imtc

The Cascade Gateway



IMTC Coalition

Transportation

US FHWA • Transport Canada • WA State DOT • BC Ministry of Transportation • BC TransLink • BNSF Railroad • Amtrak • Port of Bellingham • Port of Vancouver • Whatcom Transportation Authority

Inspection

US Customs & Border Protection • Canada Border Services Agency

Municipalities

Whatcom County, WA • Surrey & Abbotsford, BC • Bellingham, Blaine, Lynden, & Sumas, WA

Industry

WA Trucking • BC Trucking • Brokerages • Duty Free Stores • Tourism Vancouver

NGOs

VANOC • Regional Chambers • Vancouver Board of Trade • Cascadia Center • Pacific Corridor Enterprise Council

Other Governmental

Whatcom Council of Governments • US & Canadian Consulates • US GSA • State, Provincial, & Federal legislators • Ministry of Tourism

IMTC Objectives

Infrastructure

Improve border crossing approach roads and rail • Improve north-south and east-west corridor connections • Integrate ITS

Planning & Data

Improve travel information and data • Promote system management of the Cascade Gateway • Determine feasibility of rail and transit options • Monitor regional & national planning initiatives • Monitor emerging regulatory & policy changes (i.e. WHTI)

Operations, Policy, & Staffing

Promote goals of various federal initiatives such as the SPP and Smart Border Declaration • Increase border staffing • Improve traffic management at all four ports-of-entry • Support NEXUS & FAST • Explore options for binational financing • Promote adoption of passenger-rail pre-clearance under Canada's 1999 Pre-Clearance Act • Consider off-border inspection functions and processing zones

IMTC Financial Partners

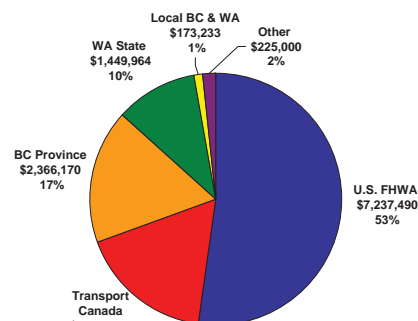
US Funding Sources:

- US Federal Highway Administration - Coordinated Border Infrastructure Program
- Washington State
- Port of Bellingham
- Cities: Blaine, Sumas, Lynden, WA

Canadian Funding Sources:

- Transport Canada
- B.C. TransLink
- Province of British Columbia
- Cities: White Rock, Surrey, Abbotsford, BC

Funding (\$USD) by Source 1999-2006[†]



[†] Does not include \$24,557,500 (USD) from U.S. FHWA for I-5 Interchange Improvements at Exit 276.

IMTC Results

Joint project selection & funding partnerships

Passenger Intercept Survey • Border Circulation Analysis • Border Wait Time Evaluation Study • ATIS wait time archive • Shortsea Shipping Study • NEXUS and FAST program marketing • NEXUS and FAST lane extensions • Truck pre-clearance system deployments • Advanced Traveler Information System • Cross-border Rail Study • Cross-border regional traffic model • Abbotsford-Sumas border improvements • Cross-border transit study • Weigh-in-motion installation • I-5 interchange analysis

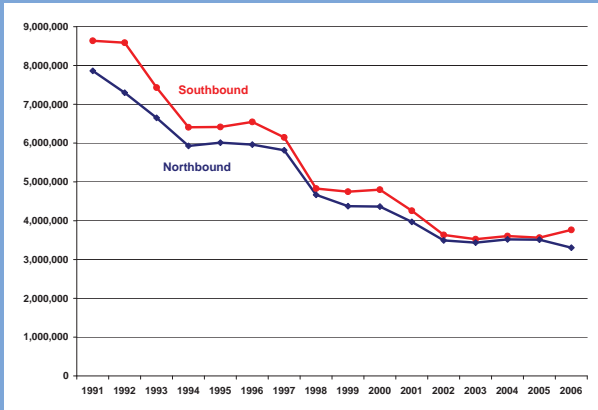
Coordinated, regional response to binational initiatives

Smart Border Declaration • U.S. - Canada Transportation Border Working Group

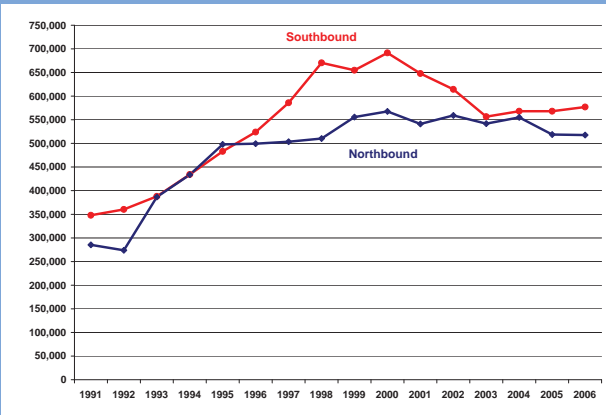
Integrated project oversight & delivery

1991 - 2006 BORDER TRENDS

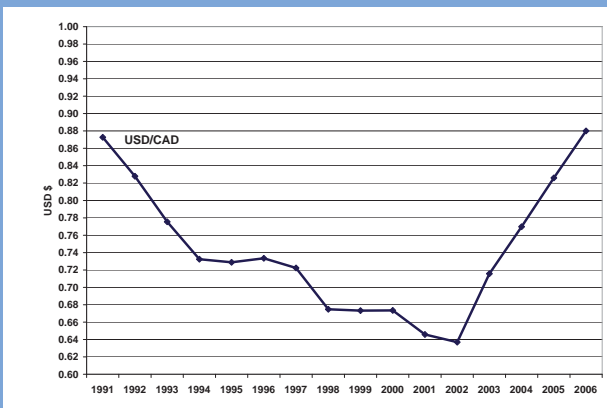
CARS



TRUCKS



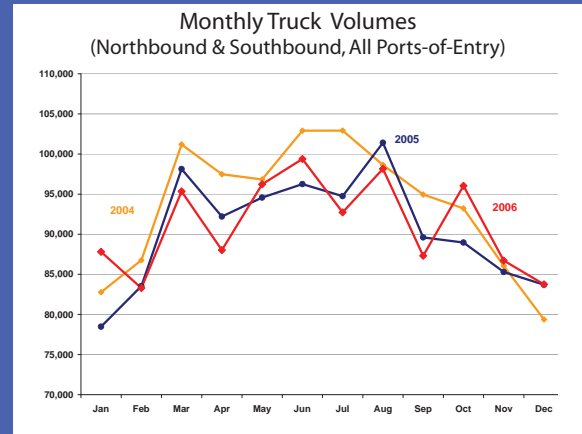
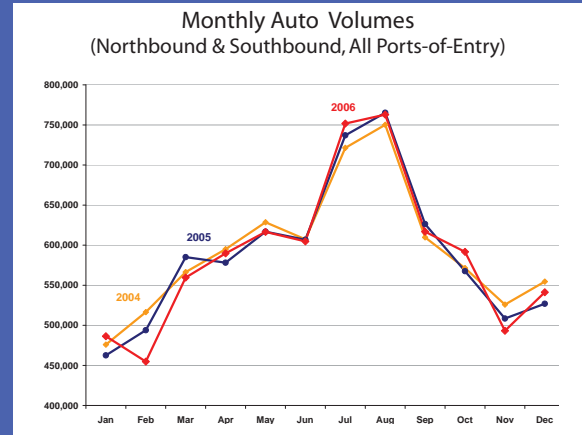
EXCHANGE RATE



- Blaine is the third busiest U.S. - Canada border crossing for passenger vehicles, and the fourth busiest commercial port-of-entry along the border.
- Over \$55 million (USD) in trade crosses the Cascade Gateway each day.
- 40 percent of the trucks crossing this gateway are going to destinations outside of Whatcom County.
- Border congestion costs an estimated \$22 million (USD) at Pacific Highway (Blaine) alone.
- 78% of national NEXUS participants are locally enrolled (March, 2006 enrollment at 75,000).

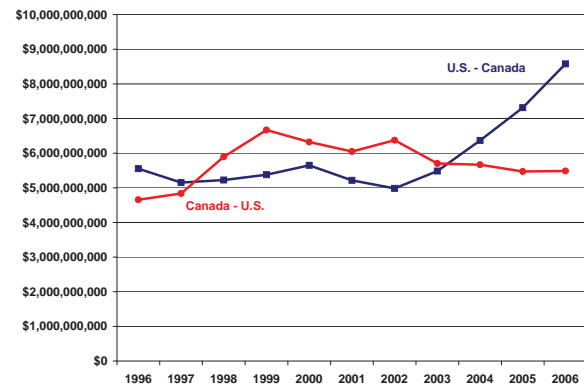
Data Sources: U.S. Customs & Border Protection, Statistics Canada (all Cascade Gateway ports-of-entry), Bank of Canada (bankofcanada.ca) Data Compiled by: Whatcom Council of Governments

Seasonal Variations 2004-2006



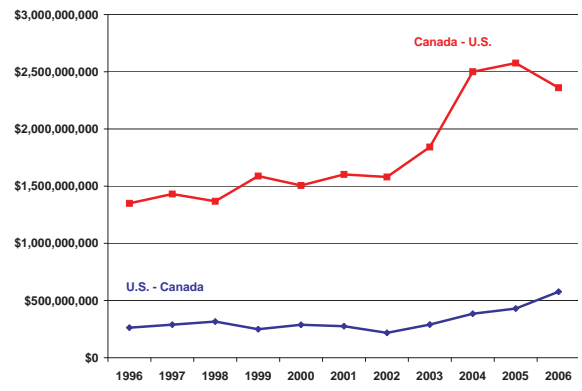
U.S. - Canada Trade Value by TRUCK

(in U.S. Dollars. Blaine, Lynden, & Sumas ports-of-entry)



U.S. - Canada Trade Value by RAIL

(in U.S. Dollars. Blaine, Lynden, & Sumas ports-of-entry)



Data Source: U.S. Dept. of Transportation Bureau of Transportation Statistics (Figures adjusted to 2000 U.S. Dollars, based on U.S. Dept. of Labor Bureau of Labor Statistics import and export price indexes)
Data Compiled by: Whatcom Council of Governments